



# THE UNIVERSITY OF NORTH CAROLINA SYSTEM

## 2020 Faculty Teaching Workload Report

November 18, 2020

University of North Carolina System  
Chapel Hill, North Carolina

# Introduction

Faculty work is complex, with all faculty engaging in some combination of research, teaching, and service. As the expectations for this mixture vary across field, faculty type, and institutional type, UNC Policy 400.3.4 “Monitoring Faculty Teaching Workloads” states that “all campuses and constituent institutions shall implement annual faculty performance evaluation policies that measure and reward all aspects of faculty workload, separately and in combination, consistent with the instructional mission.” The policy addresses faculty teaching workload policies, standardized data collection systems, and campus-based processes for monitoring faculty teaching workload. The full policy can be found in Appendix A.

In 2011, the Educational Planning, Policies, and Programs Committee of the UNC Board of Governors (BOG) appointed five BOG members, two University chancellors, and two other senior advisors to the Faculty Workload Advisory Group to review UNC Policy 400.3.4. In Spring 2012, the Advisory Group presented their findings and recommendations to the full committee. Based on the findings and recommendations of the Advisory Group, the BOG adopted an amended policy on faculty teaching workloads on January 11, 2013, which states:

All campuses and constituent institutions will develop and implement policies and procedures to monitor faculty teaching loads and to approve significant or sustained variations from expected minimums. Policies must include the criteria and approval process for reductions in institutional load attendant to increased administrative responsibilities, externally-funded research, including course buy-outs, and additional institutional and departmental service obligations. Given the complexity of faculty work activities, individual faculty teaching loads are best managed at the department and school level, and not the system or state level. However, to ensure meaningful comparisons of faculty teaching load over time and across peers, all campuses shall adopt a standard methodology for collecting data on teaching load. This standard is described below.

For reporting purposes the Board of Governors (BOG) will annually review data from the National Study of Instructional Costs & Productivity (The Delaware Study) of teaching loads for full time equivalent faculty within the University. The Delaware Study provides comparable teaching data at the discipline level using the following faculty categories: regular tenure stream, other regular, supplemental and teaching assistants. Teaching load is derived by the number of organized class courses a faculty member is assigned in a given semester. Courses that are not conducted in regularly scheduled class meetings, such as “readings,” “special topics,” “problems” or “research” courses, including dissertation/thesis research, and “individual lesson” courses (typically in music and fine arts) are excluded from the Teaching Load calculation.

Per BOG policy, standard annual teaching loads will be differentiated to accommodate the diverse missions of the individual campuses as articulated by Carnegie Classification. The following represent

the standard faculty teaching load measured by the average number of organized class courses taught per semester:

- Research Universities - Very High Research Activity: 2
- Research Universities - High Research Activity & Doctoral Granting: 2.5
- Master's Colleges & Universities - Large & Medium: 3
- Baccalaureate Colleges - Arts & Sciences: 4
- Baccalaureate Colleges - Diverse Fields: 4

A benefit of participation in the Delaware Study is that data are provided for all participating institutions by Carnegie Classification. This allows the results from UNC institutions to be benchmarked against peers by Carnegie Classification.<sup>1</sup> This comparison provides a national snapshot of comparable institutions' figures and helps to ground the results of UNC institutions in a national context. Please note that this is not a representative sample of institutions and that both the number and specific institutions vary from year to year.

The following pages present the faculty teaching workload section averages for the category "All Faculty," contrasting the average sections taught at UNC institutions with that of the same Carnegie Classification from the Delaware Study. Appendix B1 and Appendix B2 presents institutional level "All Faculty" details for sections taught and student credit hours (SCHs) per FTE faculty.<sup>2</sup> In each chart the red line indicates the median value and the X indicates the mean value for the associated Carnegie Classification.

---

<sup>1</sup> In order to process all institutional data fully, the most recent data provided by the Delaware Study for UNC institutions and their peers are from Fall 2018.

<sup>2</sup> All Faculty includes: Tenure/Tenure Track Faculty, Other Regular Faculty, Supplemental Faculty, and Teaching Assistants.

## UNC Instructional Teaching Load: Research Universities - Very High

Figure 1: Average Sections per FTE Faculty, 2008-2018

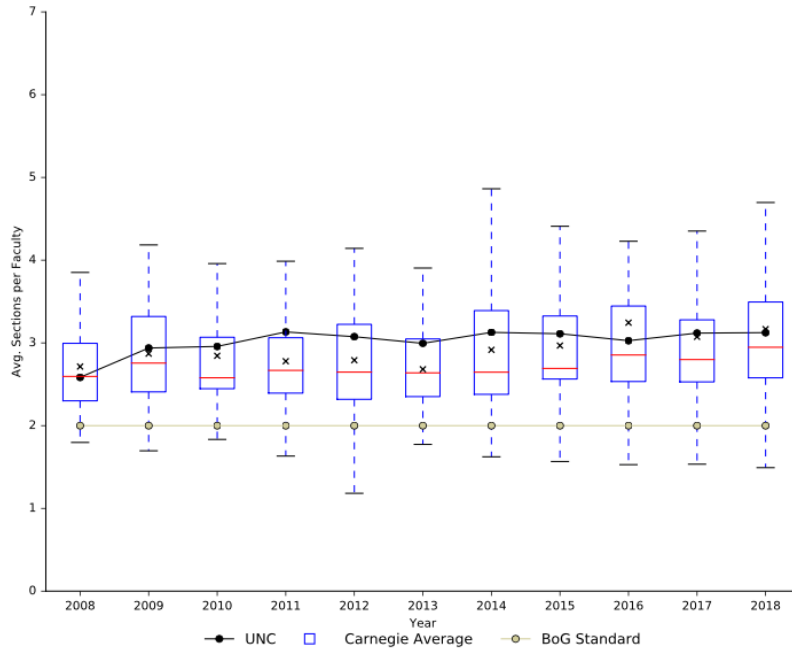
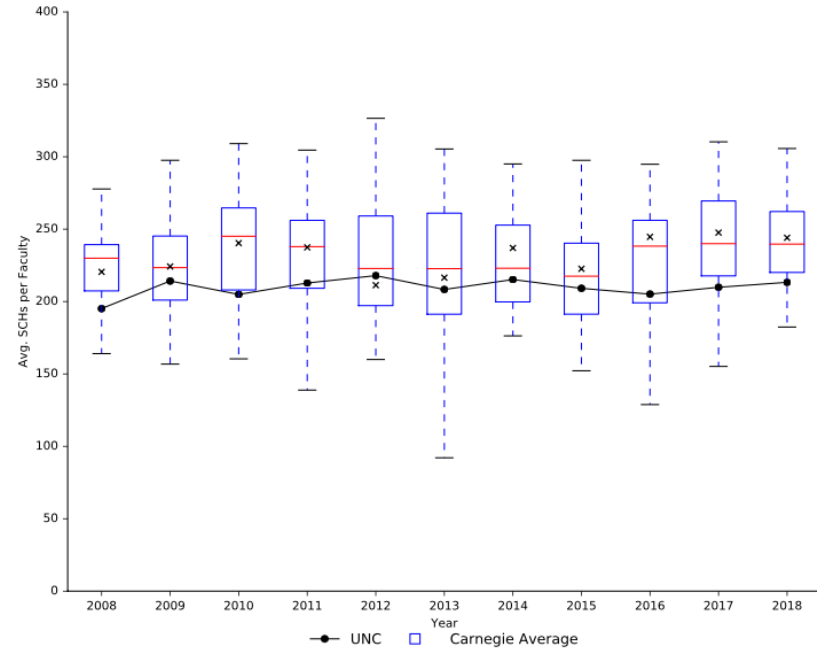


Figure 2: Average SCHs per FTE Faculty, 2008-2018



- UNC institutions in the Research Universities – Very High category: North Carolina State University and UNC-Chapel Hill.
- Since 2009, the average sections taught by faculty has been consistent.
- Since 2009, the average student credit hours taught by faculty has been consistent.
- This group exceeds the BOG standard for sections taught in all year.

## UNC Instructional Teaching Load: Research Universities - High & Doctoral

Figure 1: Average Sections per FTE Faculty, 2008-2018

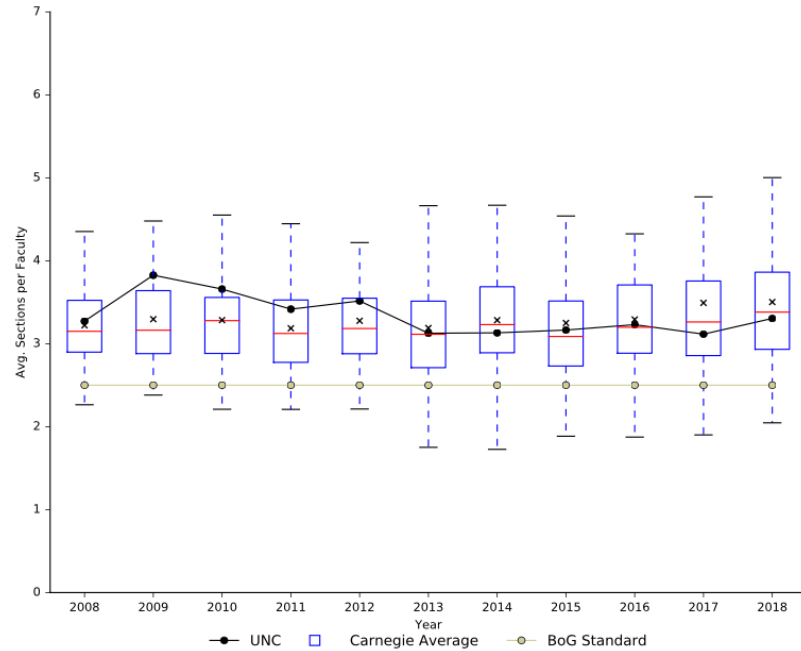
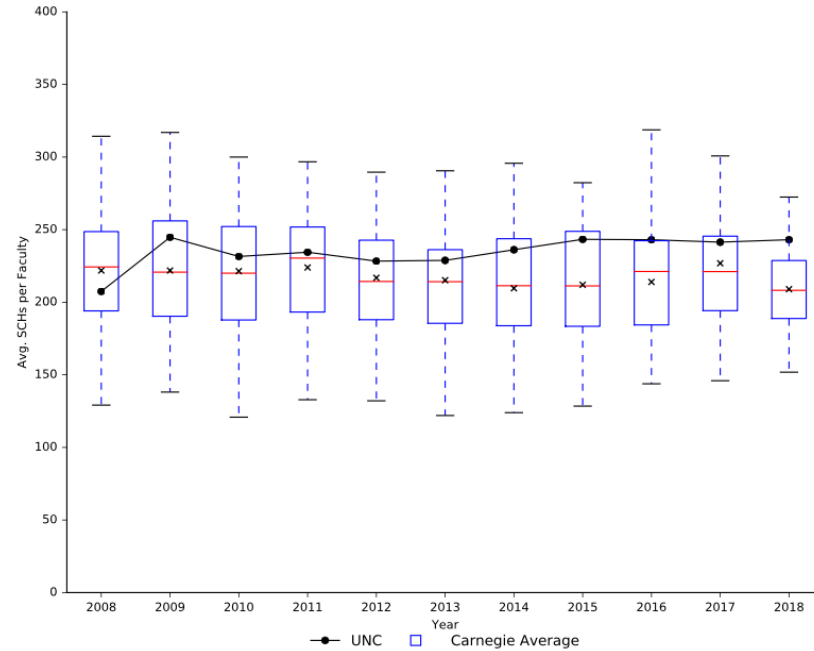


Figure 2: Average SCHs per FTE Faculty, 2008-2018



- UNC institutions in the Research Universities – High category: East Carolina University, North Carolina A&T State University, UNC Charlotte, and UNC Greensboro: All Years. UNC Wilmington is included for 2018.
- Since 2009, the average sections taught by faculty has varied between three and four sections.
- Since 2009, the average student credit hours taught by faculty has been consistent.
- This group exceeds the BOG standard for sections taught in all year.

## UNC Instructional Teaching Load: Master's - All levels

Figure 1: Average Sections per FTE Faculty, 2008-2018

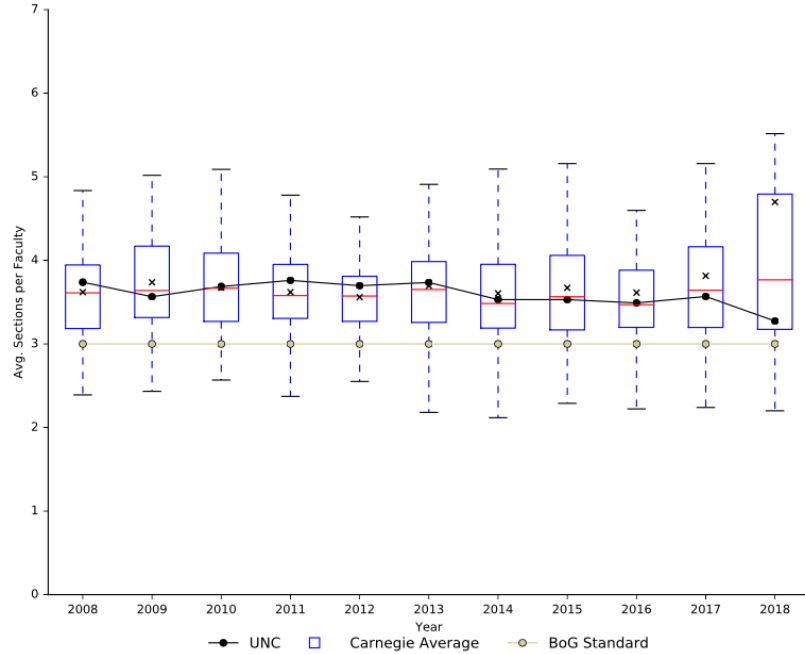
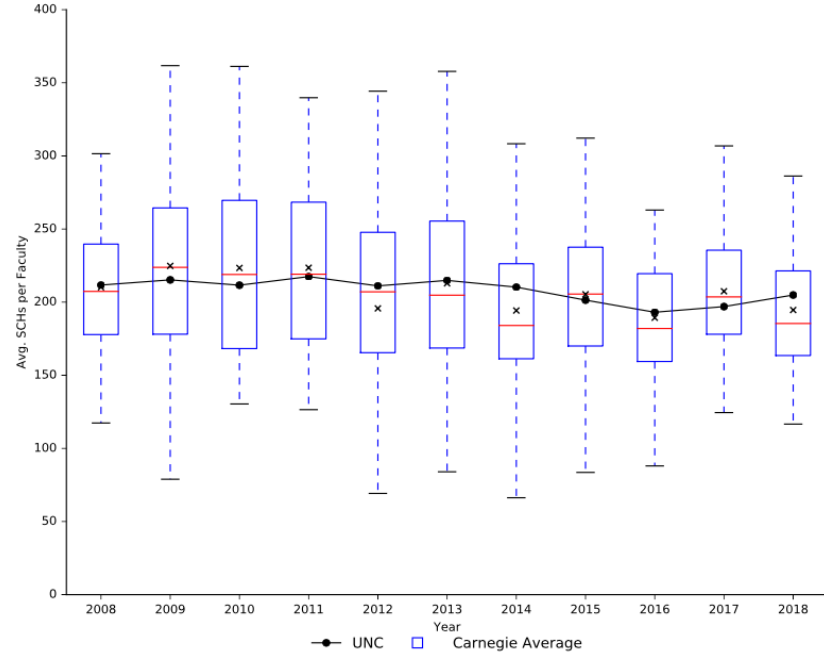


Figure 2: Average SCHs per FTE Faculty, 2008-2018



- UNC institutions in the Master's categories: Appalachian State University, North Carolina Central University, UNC Pembroke, Western Carolina University, and Winston-Salem State University: All Years. Elizabeth City State University was included 2014-2017. UNC Wilmington was included from 2008-2017.
- Since 2008, the average sections taught by faculty has varied between three and four sections.
- Since 2008, the average student credit hours taught by faculty has been consistent.
- This group exceeds the BOG standard for sections taught in all years.

## UNC Instructional Teaching Load: Baccalaureate - Arts & Sciences & Diverse Fields

Figure 1: Average Sections per FTE Faculty, 2008-2018

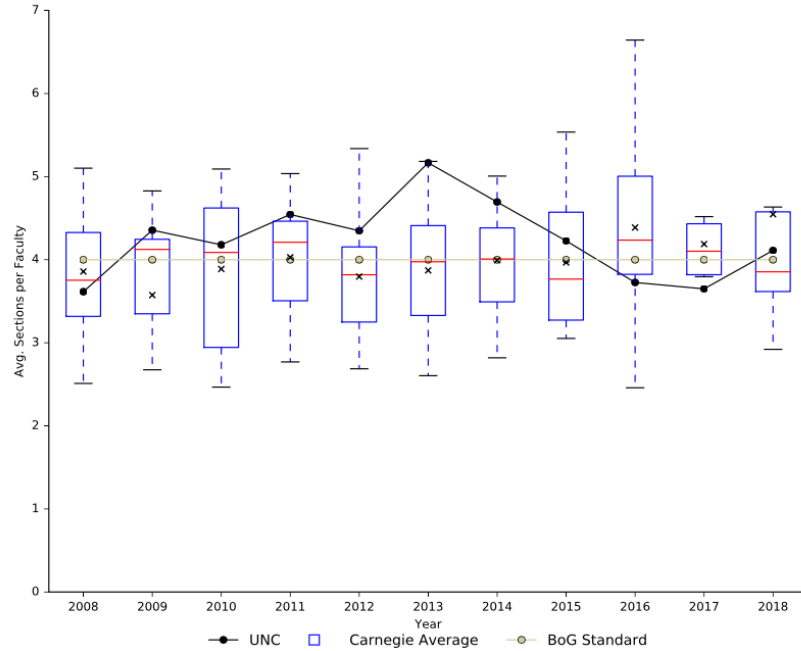
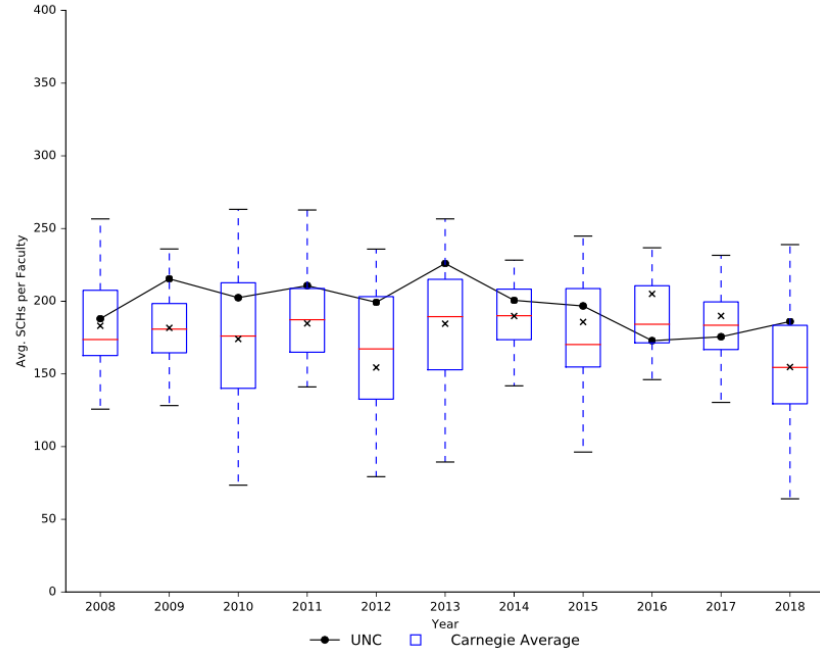


Figure 2: Average SCHs per FTE Faculty, 2008-2018



- UNC institutions in the Bachelor's category: UNC Asheville: All years. Elizabeth City State University was included for 2008 – 2013 and 2018.
- Institutions in this group have had more variability in course sections taught as a result of enrollment fluctuations and Carnegie Classification changes.
- Since 2008, the average sections taught by faculty has varied between three and a half and five sections.
- Since 2008, the average student credit hours taught by faculty has varied between 175 and 250.
- This group exceeds the BOG standard for sections taught in 2009 – 2015, and again in 2018.

## Appendix A

### Monitoring Faculty Teaching Workloads

The UNC Policy Manual

400.3.4\*

Adopted 04/12/96

Amended 03/07/01

Amended 01/11/13

### **Monitoring Faculty Teaching Workloads**

#### **Introduction:**

As a result of findings and recommendations of the 1995 Legislative Study Commission on the Status of Education at the University of North Carolina, the 1995 Session of the General Assembly enacted House Bill 229, Section 15.9 entitled "Rewarding Faculty Teaching." The bill requires;

*The Board of Governors shall design and implement a system to monitor faculty teaching workloads on the campuses of the constituent institutions.*

*The Board of Governors shall direct constituent institutions that teaching be given primary consideration in making faculty personnel decisions regarding tenure, teaching, and promotional decisions for those positions for which teaching is the primary responsibility. The Board shall assure itself that personnel policies reflect this direction.*

*The Board of Governors shall develop a plan for rewarding faculty who teach more than a standard academic load.*

*The Board of Governors shall review the procedures used by the constituent institutions to screen and employ graduate teaching assistants. The Board shall direct that adequate procedures be used by each constituent institution to ensure that all graduate teaching assistants have the ability to communicate and teach effectively in the classroom.*

*The Board of Governors shall report on the implementation of this section to the Joint Legislative Education Oversight Committee by April 15, 1996.*

#### **System to Monitor Faculty Teaching Loads:**

All campuses and constituent institutions will develop and implement policies and procedures to monitor faculty teaching loads and to approve significant or sustained variations from expected minimums. Policies must include the criteria and approval process for reductions in institutional load attendant to increased administrative responsibilities, externally-funded research, including course buy-outs, and additional institutional and departmental service obligations. Given the complexity of faculty work activities, individual faculty teaching loads are best managed at the department and school level, and not the system or state level. However, to ensure meaningful comparisons of faculty teaching load over time and across peers, all campuses shall adopt a standard methodology for collecting data on teaching load. This standard is described below.



For reporting purposes the Board of Governors will annually review data from the National Study of Instructional Costs & Productivity (The Delaware Study)<sup>1</sup> of teaching loads for full time equivalent faculty within the University. The Delaware Study provides comparable teaching data at the discipline level using the following faculty categories: regular tenure stream, other regular, supplemental and teaching assistants. Teaching load is derived by the number of organized class courses a faculty member is assigned in a given semester. Courses that are not conducted in regularly scheduled class meetings, such as “readings,” “special topics,” “problems” or “research” courses, including dissertation/thesis research, and “individual lesson” courses (typically in music and fine arts) are excluded from the Teaching Load calculation.

\*[Supersedes and Replaces the prior UNC Policy 400.3.4 “Monitoring Faculty Teaching Workloads” as this version was approved by the Board of Governors on January 11, 2013]

Standard annual teaching loads will be differentiated to accommodate the diverse missions of the individual campuses. These differences will be captured by Carnegie Classification.<sup>2</sup> Standard faculty teaching load measured by number of organized class courses a faculty member is assigned in a given academic year is the following:

- Research Universities I: 4
- Doctoral Universities I: 5
- Masters (Comprehensive) I: 6
- Baccalaureate (Liberal Arts) I: 8
- Baccalaureate (Liberal Arts) II: 8

#### **Distinction between Teaching, Instructional, and Total Faculty Workload:**

In addition to teaching load, as defined above, instructional workload also includes developing materials for a new course, developing courseware or other materials for technology-based instruction, supervising undergraduate research and masters theses and doctoral dissertations, directing students in co-curricular activities such as plays, preparing and equipping new laboratories, supervision of teaching assistants, and academic advising.

To ensure that course material delivered in the classroom is relevant, faculty perform scholarly activities such as research, scholarship, and creative expression. These activities may include writing articles, monographs, and grant proposals, editing a scholarly journal, preparing a juried art exhibit, directing a center or institute, or performing in a play, concert, or musical recital.

Faculty also engage in service activities that inform classroom teaching and student learning. These activities may include responses to requests for information, advice, and technical assistance as well as instruction offered directly through continuing education. Service includes training and technology transfer for business and industry, assistance to public schools and unit of government, and commentary and information for the press and other media. Service also includes time spent internal

---

<sup>1</sup> The National Study of Instructional Costs & Productivity (“The Delaware Study”) is the acknowledged “tool of choice” for comparative analysis of faculty teaching loads, direct instructional cost, and separately budgeted scholarly activity, all at the level of the academic discipline.

<sup>2</sup> The Carnegie Classification™ is a framework for recognizing and describing institutional diversity in U.S. higher education. This framework has been widely used in the study of higher education, both as a way to represent and control for institutional differences, and also in the design of research studies to ensure adequate representation of sampled institutions, students, or faculty.

to the university which may include participation in faculty governance, serving on search committees for new faculty, and preparing for discipline accreditation visits.

In order to appropriately monitor and reward faculty teaching, evaluations must be placed in the context of total faculty workload. Therefore, all campuses and constituent institutions shall implement annual faculty performance evaluation policies that measure and reward all aspects of faculty workload, separately and in combination, consistent with the instructional mission.

**Rewarding Teaching:**

The board's intent is that measures described in the previous section will lead to personnel policies and decisions that take due account of each faculty member's contribution to the undergraduate teaching mission of the institution. The President and the board are concerned that faculty be rewarded both for the quantity and even more for the quality of teaching. Concerning quality, the board notes the enthusiastic support from campuses and the public for its teaching awards. It takes pride in the standard for teaching excellence that is set by award recipients.

All policies and procedures required under The UNC Policy 400.3.4 must be submitted by campuses and constituent institutions to General Administration and approved by the President.

**Appendix B1: Average Sections per FTE Faculty**

<b>Carnegie Group</b>	<b>Institution</b>	<b>2008</b>	<b>2009</b>	<b>2010</b>	<b>2011</b>	<b>2012</b>	<b>2013</b>	<b>2014</b>	<b>2015</b>	<b>2016</b>	<b>2017</b>	<b>2018</b>
<b>Research - Very High</b>	North Carolina State University	2.6	2.8	2.8	3.2	3.2	3.0	3.3	3.1	3.1	3.2	3.2
	UNC-Chapel Hill	2.6	3.1	3.1	3.1	3.0	3.0	3.0	3.1	3.0	3.0	3.0
	<i>BOG Standard</i>	2.0	2.0	2.0	2.0	2.0	2.0	2.0	2.0	2.0	2.0	2.0
<b>Research - High</b>	East Carolina University	3.1	4.3	3.9	3.6	3.6	3.4	3.3	3.3	3.2	3.3	3.2
	North Carolina A&T State University	3.4	3.8	3.7	3.3	3.4	3.7	3.6	3.6	3.5	3.1	3.0
	UNC Charlotte	3.0	3.1	3.0	2.8	2.9	2.8	2.8	2.8	2.7	2.8	2.9
	UNC Greensboro	3.6	4.1	4.0	4.0	4.2	2.7	2.8	3.0	3.4	3.3	3.7
	UNC Wilmington	3.7	3.8	3.8	3.7	3.7	3.7	3.8	3.3	3.7	3.7	3.8
	<i>BOG Standard</i>	2.5	2.5	2.5	2.5	2.5	2.5	2.5	2.5	2.5	2.5	2.5
<b>Master's - All Levels</b>	Appalachian State University	3.5	3.5	3.5	3.6	3.7	3.5	3.4	3.4	3.4	3.3	3.1
	Fayetteville State University	3.9	3.9	3.8	4.0	4.0	4.1	4.1	3.4	2.8	3.3	3.1
	North Carolina Central University	4.2	3.8	4.2	4.6	4.2	3.9	3.2	3.1	2.9	2.8	3.3
	UNC Pembroke	3.9	3.9	3.9	3.9	3.9	4.0	3.9	4.1	3.6	3.4	3.5
	Western Carolina University	3.2	3.1	3.1	3.1	3.1	3.1	3.2	3.2	3.2	3.2	3.2
	Winston-Salem State University	3.2	3.0	3.4	3.5	3.4	3.8	3.1	3.0	2.8	3.3	3.4
	<i>BOG Standard</i>	3.0	3.0	3.0	3.0	3.0	3.0	3.0	3.0	3.0	3.0	3.0
<b>Bachelor's</b>	Elizabeth City State University	4.0	4.3	4.0	4.6	4.4	6.1	5.1	4.9	5.5	5.5	4.5
	UNC Asheville	3.7	4.5	4.4	4.5	4.3	4.2	4.3	4.2	3.7	3.6	3.7
	<i>BOG Standard</i>	4.0	4.0	4.0	4.0	4.0	4.0	4.0	4.0	4.0	4.0	4.0

Notes: The Carnegie Classifications are updated every few years. In the most recent (2018) update, ECSU moved back to the Baccalaureate Colleges: Diverse Fields category, and UNCW moved to the Doctoral Universities: High Research Activity category.

**Appendix B2: Average Student Credit Hours per FTE Faculty**

<b>Carnegie Group</b>	<b>Institution</b>	<b>2008</b>	<b>2009</b>	<b>2010</b>	<b>2011</b>	<b>2012</b>	<b>2013</b>	<b>2014</b>	<b>2015</b>	<b>2016</b>	<b>2017</b>	<b>2018</b>
<b>Research - Very High</b>	North Carolina State University	216.8	243.1	220.7	236.8	245.6	229.5	242.5	220.5	224.8	232.5	240.5
	UNC-Chapel Hill	173.5	185.3	189.1	188.8	190.2	187.1	187.9	197.7	185.5	187.2	186.0
<b>Research - High</b>	East Carolina University	201.2	253.4	224.0	232.9	231.5	228.5	236.3	249.0	256.1	258.2	251.4
	North Carolina A&T State University	187.2	247.4	233.9	226.5	211.7	229.8	236.2	242.4	241.2	231.3	220.4
	UNC Charlotte	216.3	232.2	237.3	248.7	236.1	252.9	259.7	264.9	252.6	260.9	264.2
	UNC Greensboro	225.1	246.1	230.9	229.8	234.0	204.1	212.4	217.0	222.3	215.3	253.3
	UNC Wilmington	236.4	246.9	246.9	230.8	228.4	227.9	238.7	206.2	236.8	231.9	226.0
<b>Master's - All Levels</b>	Appalachian State University	216.4	218.0	213.2	229.5	226.4	227.9	216.6	216.3	221.1	216.9	212.0
	Fayetteville State University	213.6	241.3	226.2	233.5	238.7	244.8	240.8	198.2	151.3	201.3	207.4
	North Carolina Central University	217.9	216.4	229.5	229.3	220.9	202.0	201.6	193.1	182.1	175.9	198.2
	UNC Pembroke	203.9	202.8	208.8	198.7	194.6	196.0	197.4	213.5	181.2	180.0	198.6
	Western Carolina University	182.0	208.5	189.2	218.3	202.4	209.0	210.2	213.4	215.7	217.8	221.6
	Winston-Salem State University	181.1	172.7	167.4	182.3	166.5	196.6	166.5	162.2	172.1	171.8	191.4
<b>Bachelor's</b>	Elizabeth City State University	198.5	228.0	206.1	208.8	201.1	253.7	205.3	208.3	184.3	180.1	188.5
	UNC Asheville	184.2	202.8	198.8	212.7	197.4	198.2	195.9	196.7	172.9	175.5	183.6

Notes: The Carnegie Classifications are updated every few years. In the most recent (2018) update, ECSU moved back to the Baccalaureate Colleges: Diverse Fields category, and UNCW moved to the Doctoral Universities: High Research Activity category.